

1. Qual'è la pianta corrispondente al prospetto in figura?

prospetto



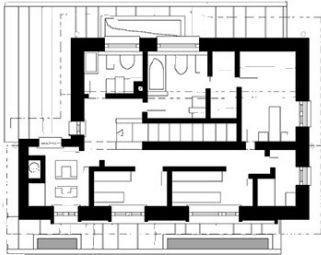
1



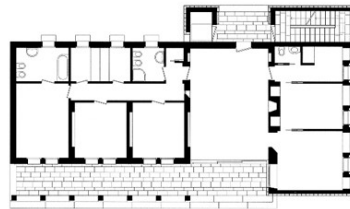
2



3



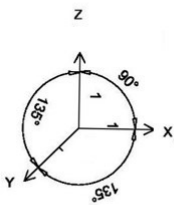
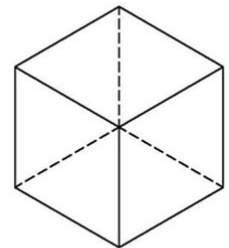
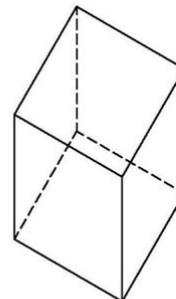
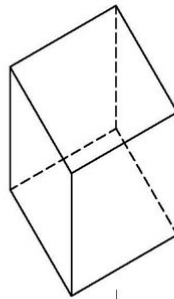
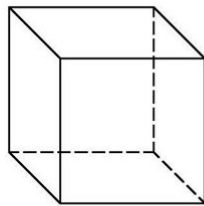
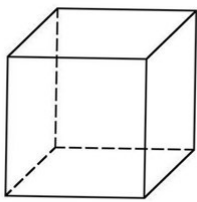
4



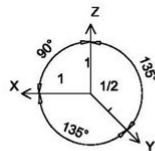
5

- A) 1
- B) 2
- C) 3
- D) 4
- E) 5

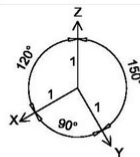
2. Qual è il riferimento nell'assonometria obliqua militare?



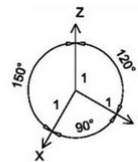
1



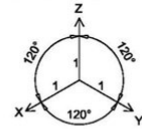
2



3



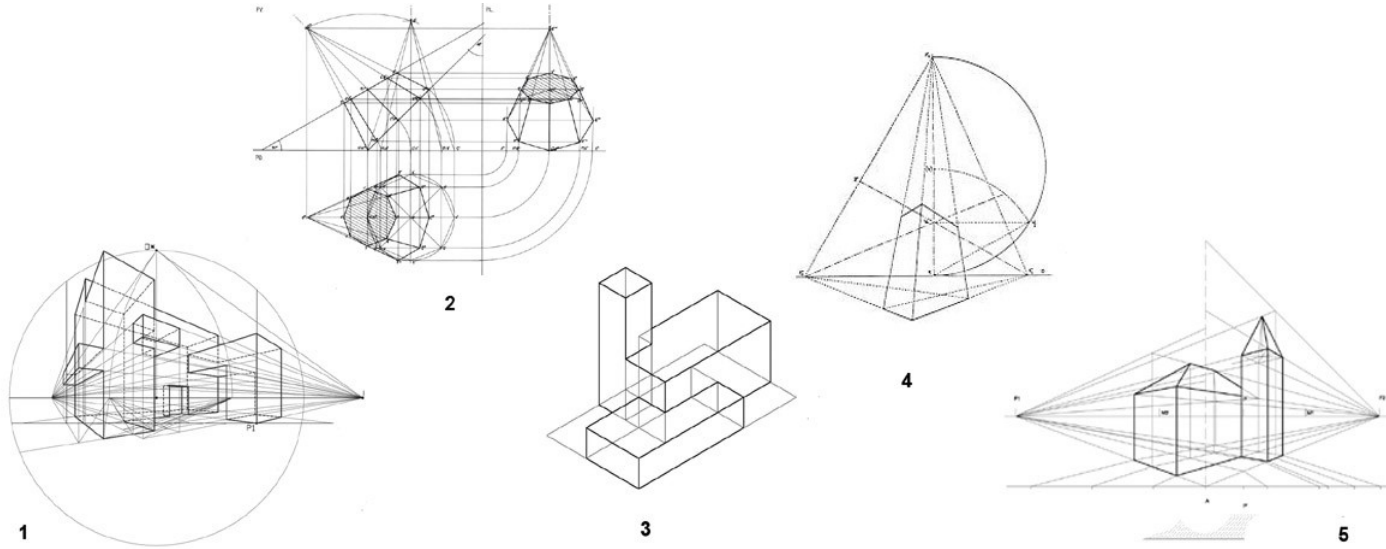
4



5

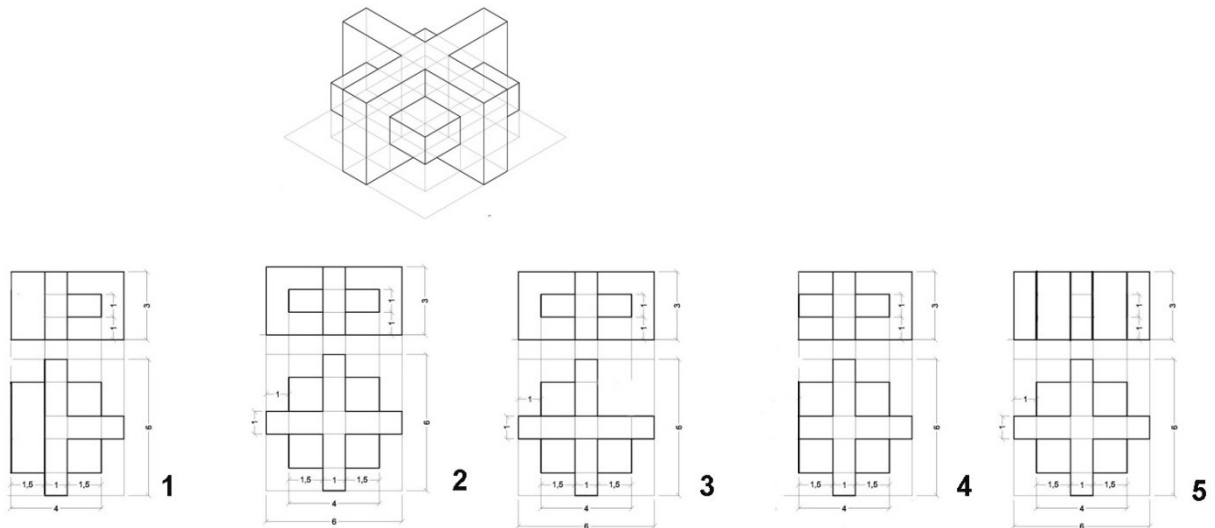
- A) 1
- B) 2
- C) 3
- D) 4
- E) 5

3. Quale delle figure è una proiezione ortogonale?



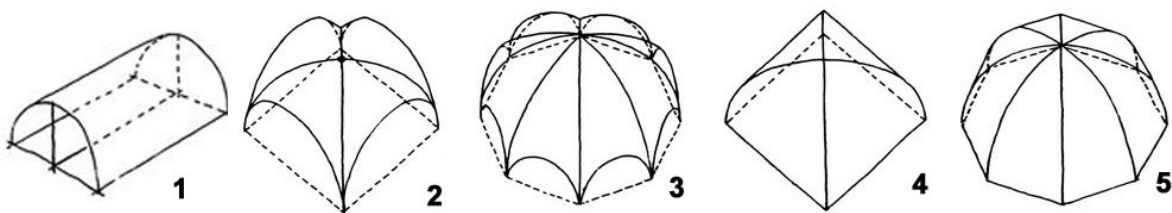
- A) 1
- B) 2
- C) 3
- D) 4
- E) 5

4. A quale delle rappresentazioni in proiezione ortogonale corrisponde l'assonometria in figura?



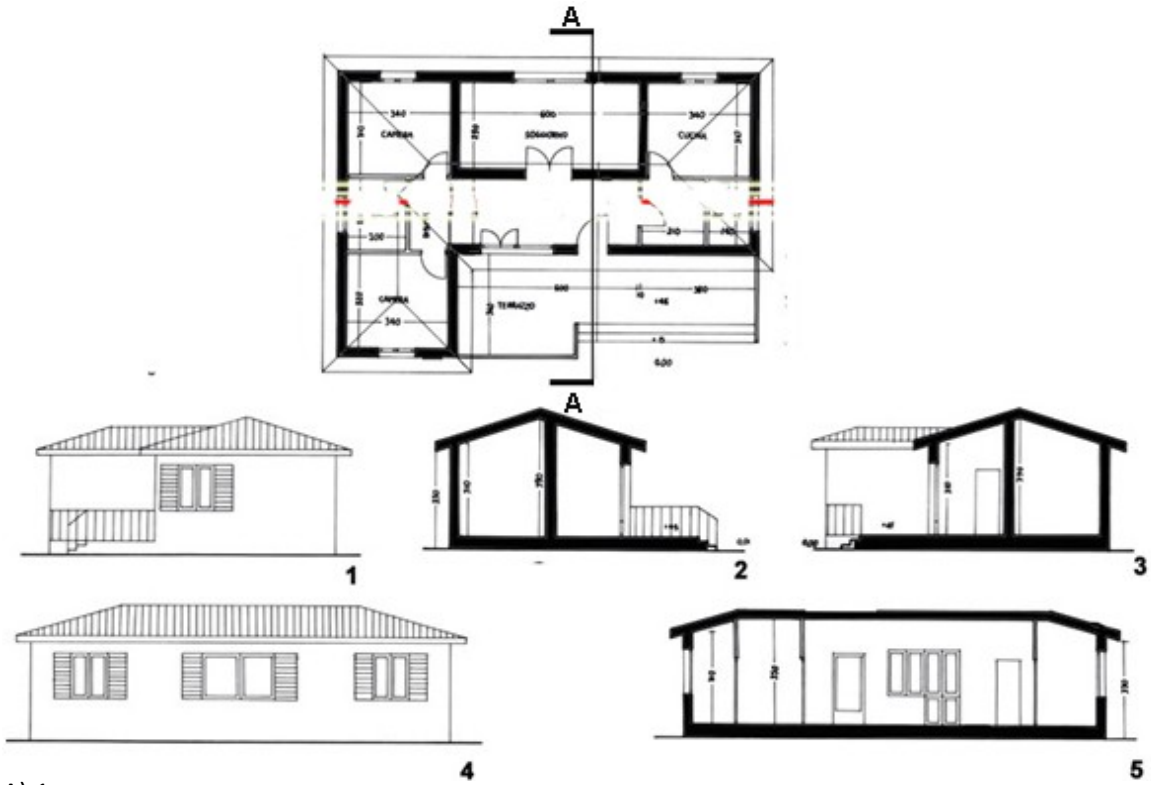
- A) 1
- B) 2
- C) 3
- D) 4
- E) 5

5. Quale di queste volte è una volta semplice?



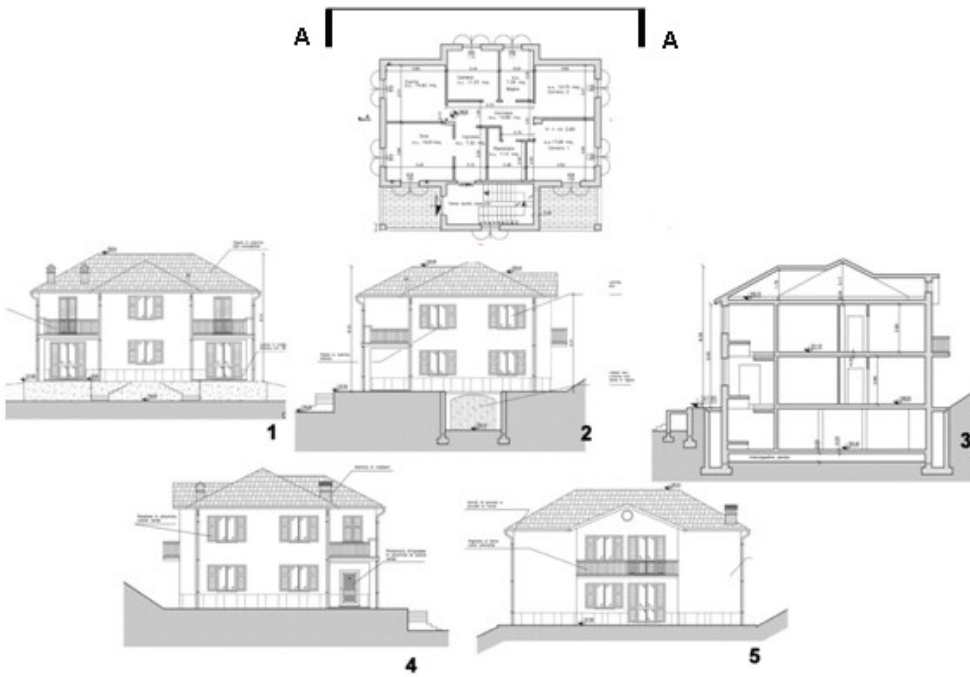
- A) 1
- B) 2
- C) 3
- D) 4
- E) 5

6. A quale delle immagini corrisponde la sezione AA?



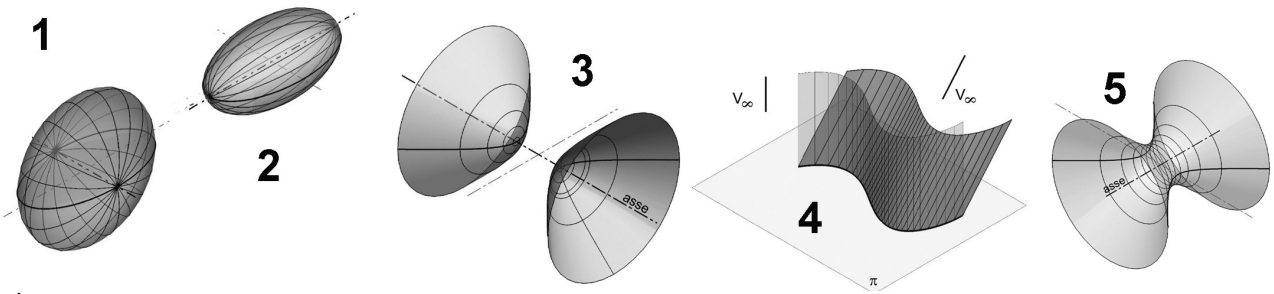
- A) 1
- B) 2
- C) 3
- D) 4
- E) 5

7. Qual è il prospetto AA?



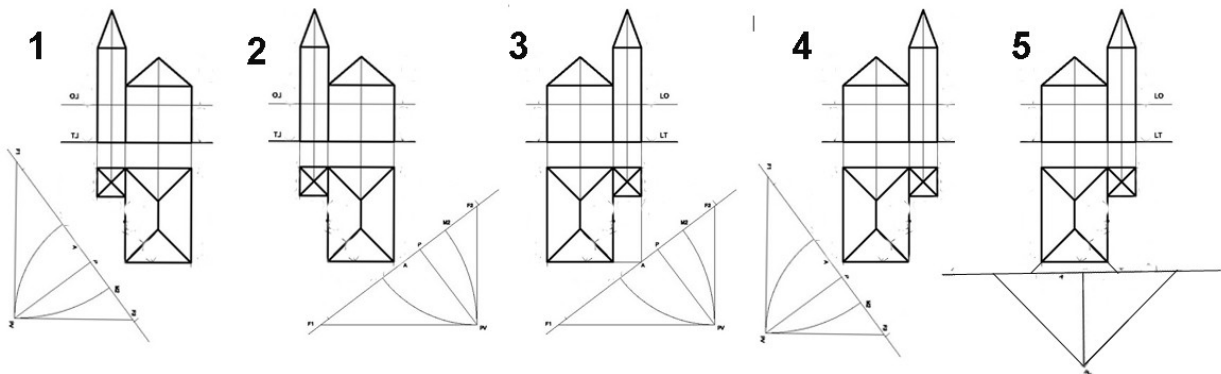
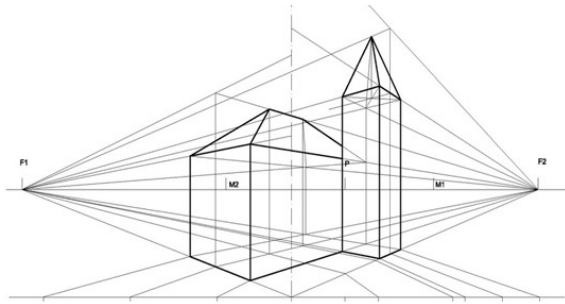
- A) 1
- B) 2
- C) 3
- D) 4
- E) 5

8. Quale delle superfici è generata dalla traslazione di una curva?



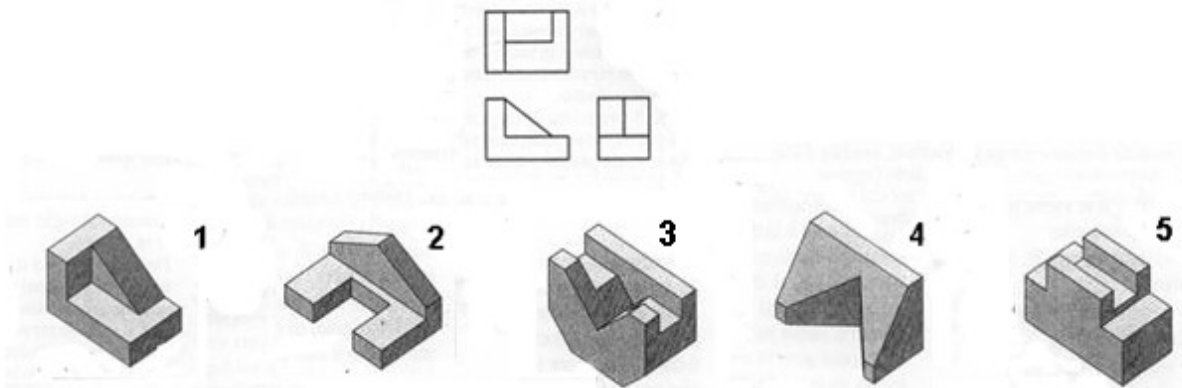
- A) 1
- B) 2
- C) 3
- D) 4
- E) 5

9. A quale delle proiezioni ortogonali corrisponde la prospettiva in figura?



- A) 1
- B) 2
- C) 3
- D) 4
- E) 5

10. Qual'è l'assonometria dell'oggetto rappresentato in pianta?



- A) 1
- B) 3
- C) 5
- D) 2
- E) 4